

I, Louise V. Isaacs, Clerk of the Circuit Court of Martin County, Florida, hereby certify that this plat was filed for record in Plat Book 8, Page 17, Martin County, Florida, public records this day of _____, 1981.

LOUISE V. ISAACS, CLERK
CIRCUIT COURT
MARTIN COUNTY, FLORIDA

BY: _____
Deputy Clerk

File No. _____

THE CROSSINGS

BEING A PORTION OF SECTION 7,
TOWNSHIP 38 SOUTH, RANGE 41 EAST,
MARTIN COUNTY, FLORIDA.

SHEET 3 OF 3 SHEETS

HUTCHEON ENGINEERS INCORPORATED
Civil Engineers and Land Surveyors
Belle Glade, Palm City, West Palm Beach

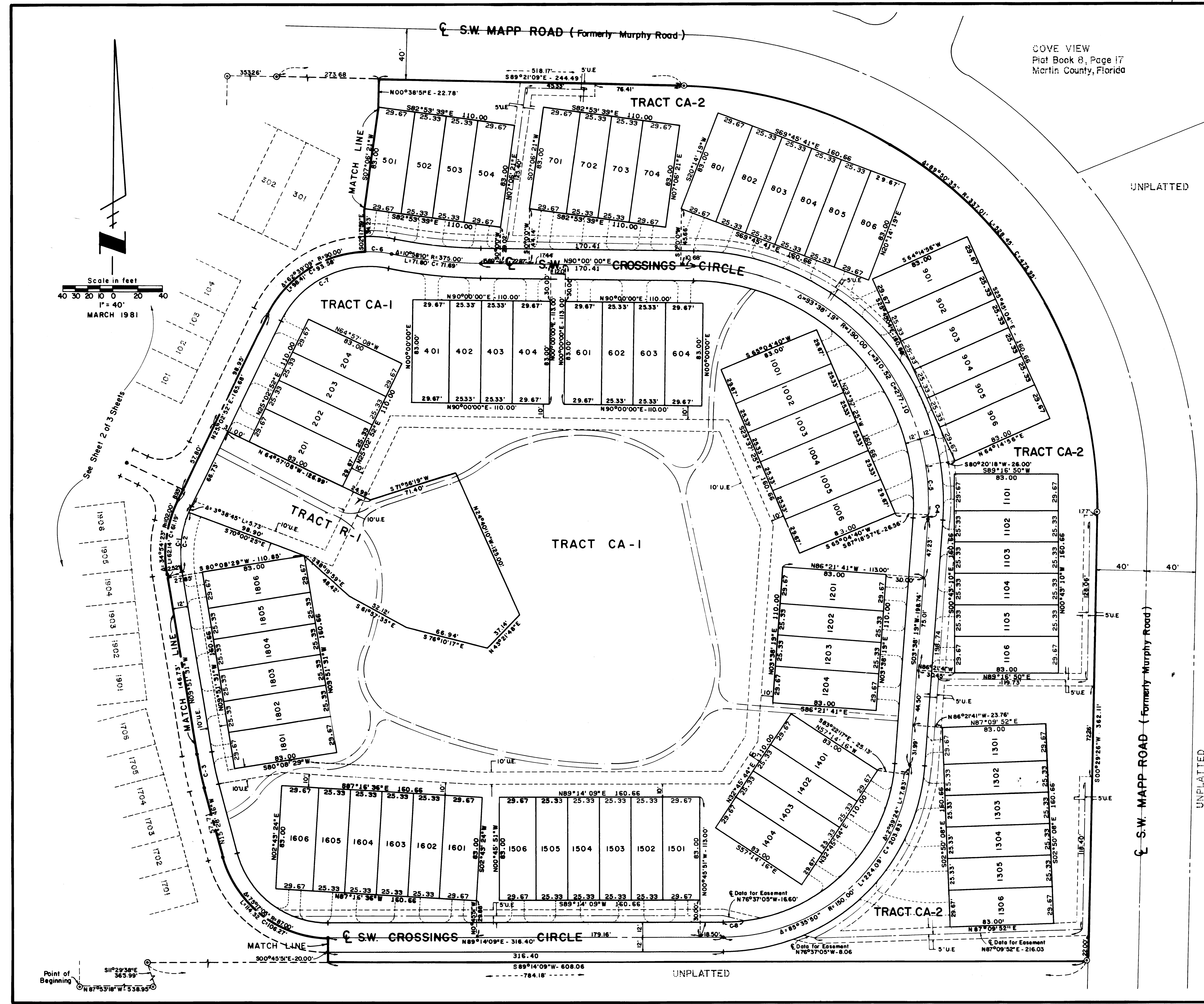
LEGEND

- CA Denotes Common Area
- R Denotes Recreation Parcel
- Denotes Pedestrian / Bike Paths
- Denotes Driveway
- UE Denotes Utility Easement
- Denotes Permanent Control Point
- Denotes Permanent Reference Monument
- C-00 Denotes Curve Data as shown in Curve Table

NOTE:

Bearings as shown hereon are referenced to the Plat of COVE VIEW, as recorded in Plat Book 8, Page 17, Public Records of Martin County, Florida.

CURVE TABLE				
No.	Delta	Radius	Length	Chord
C-1	34°54'23"	90.00	54.83	53.99
C-2	31°15'38"	90.00	49.10	48.50
C-3	5°37'15"	282.00	27.67	27.65
C-4	0°57'16"	190.00	3.17	3.17
C-5	12°20'45"	190.00	40.94	40.86
C-6	13°16'09"	90.00	20.84	20.80
C-7	75°55'18"	78.00	103.36	95.96
C-8	6°41'58"	138.00	16.14	16.13



Scale in feet
40 30 20 10 0 20 40
1" = 40'
MARCH 1981

See Sheet 2 of 3 Sheets

Point of Beginning
S10°29'38"E 365.99'
N87°53'18"W 538.95'

UNPLATTED

UNPLATTED